

VERMONT Antique TRAIL.com

...to find your treasure

Vermonters are passionate about their home and its rich history... VermontAntiqueTrail.com will take you on an unforgettable antiquing adventure, amidst breathtaking landscape, and through the very doors of their passion.

Start in the Northeast Kingdom, named the most desirable place to visit in the country by the National Geographic Society.

Head southwest to the Central Vermont Region, well known for its unique granite heritage, memorialized at the Vermont Granite Museum. Stop in Montpelier for a picnic on the State House lawn.



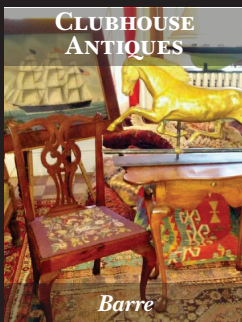
Lyndonville



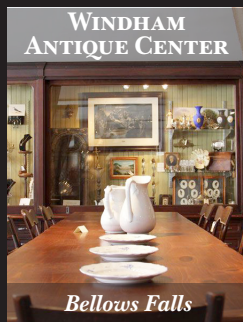
East Barre



Waitsfield



Barre



Bellows Falls



Chester



Colchester



Manchester



Bradford

Following the Vermont Antique Trail, one will discover upscale antique galleries as well as a mélange of privately owned shops and multivendor malls with a mixture of antiques and vintage collectibles.
follow us...

Head north to the Lake Champlain Valley Region, named after the sixth largest lake in the United States. The region is home to Burlington, Vermont's largest city, and the historic Shelburne Farms, missioned to educate for a sustainable future.

Travel south alongside pristine farmlands and enjoy stunning views of the western mountains. Take a stroll in downtown Rutland, recently revitalized into an 'eclectic mix of old and new'. Head southwest to Manchester, a highly acclaimed resort village since the late 1800's. Head east to Bellows Falls and Chester, then continue north to complete your great adventure in the Eastern Vermont Gateway Region. Do not miss Quechee Gorge, 'Vermont's Little Grand Canyon'.

VTAntiqueBuyWays.com



THE ULTIMATE VERMONT ANTIQUING experience.

VTAntiqueBuyWays.com is created by local antique professionals as the gateway to the Green Mountain State's best hidden secrets, scenic routes, historic landmarks, architectural highlights, and everything of interest to antique hunters.

The online visitors guide provides a series of convenient day trip itineraries, mapped out based on current information. The guide also offers local lodging and restaurant discounts. Combine several itineraries to create a customized weekend, reduced rate mid-week, or week-long Vermont antique hunt.



VTAntiqueBuyWays.com can create the ultimate antique holiday in Vermont, where antiques have a long tradition.

VTAntiqueBuyWays.com

VTAntiqueBuyWays.com is not affiliated with AntqueTrail.com. Funding for this advertisement was made possible with a grant from USDA Rural Development. 5/16 - 5/17

Crossroads of Vermont



BRANDON
(25) The Perfect Image
6800 US Route 7, VT 05733
802-353-1513
ThePerfectImageVT.com



PITTSFORD
(26) Antiques & Uniques
2636 US Route 7, VT 05763
802-747-8018
AntiquesAndUniquesVT.com



PITTSFORD
(27) Tom's Treasures
3307 US Route 7, VT 05763
802-483-2334
TomsTreasuresOn7.com



RUTLAND
(28) 3 Crows Vintage
Rt 7/24 McKinley Ave, VT 05701
802-773-0795
MrTwitters.com



RUTLAND
(29) Christini N Me
62 Merchants Row, VT 05701
802-236-1199
ChristiniNMeAntiques.com



RUTLAND
(30) Elegant Seconds
35 Strongs Ave, VT 05701
802-770-3739
ElegantSecondsVT.com



RUTLAND
(31) The Antique Shop
45 N Main St, VT 05701
802-747-7800
TheAntiqueShopVT.com

Green Mountains



MANCHESTER CENTER
(32) Green Peak Elements
4935 Main St, VT 05255
802-768-1173
GreenPeakElements.com

Southern Vermont



BELLOWS FALLS
(33) Windham Antique Center
5 The Sq #1, VT 05101
802-732-8081
WindhamAntiqueCenter.com

AntiqueTRAIL.com

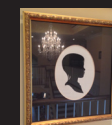
AlabamaAntiqueTrail.com
ArkansasAntiqueTrail.com
FloridaAntiqueTrail.com
GeorgiaAntiqueTrail.com
IllinoisAntiqueTrail.com
IndianaAntiqueTrail.com
KentuckyAntiqueTrail.com
LouisianaAntiqueTrail.com
MaineAntiqueTrail.com
MississippiAntiqueTrail.com
NewHampshireAntiqueTrail.com
NewYorkAntiqueTrail.com
NorthCarolinaAntiqueTrail.com
OhioAntiqueTrail.com
OklahomaAntiqueTrail.com
SouthCarolinaAntiqueTrail.com
TennesseeAntiqueTrail.com
TxAntiqueTrail.com
VermontAntiqueTrail.com
VirginiaAntiqueTrail.com
WestVirginiaAntiqueTrail.com

Antique Show Calendar and Map
on *AntiqueShow*TRAIL.com

Antique TRAIL.com

Following VermontAntiqueTrail.com, one will discover upscale antique galleries as well as a mélange of privately owned shops and multivendor malls with a mixture of antiques and vintage collectibles. However, the most delightful treasures one will find along the trail are the charming and knowledgeable people.

Visit VermontAntiqueTrail.com to see additional antique shop listings, hours, photos, websites, and maps.



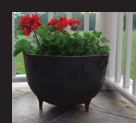
Marcia@AntiqueTrail.com
256-797-5640
Brochures@AntiqueTrail.com
502-963-3686
Admin@AntiqueTrail.com
AntiqueTrail.com
P.O. Box 1134
Powell, TN 37849



NEW HAMPSHIRE
Antique
TRAIL.com
ANTIQUES
VINTAGE
ARCHITECTURAL
REPURPOSED
RETRO
CONSIGNMENT
SHOWS • MARKETS • AUCTIONS

VERMONT
Antique
TRAIL.com
ANTIQUES
VINTAGE
ARCHITECTURAL
REPURPOSED
RETRO
CONSIGNMENT
SHOWS • MARKETS • AUCTIONS

MAINE
Antique
TRAIL.com
ANTIQUES
VINTAGE
ARCHITECTURAL
REPURPOSED
RETRO
CONSIGNMENT
SHOWS • MARKETS • AUCTIONS



See more states at AntiqueTRAIL.com
Follow us at Facebook.com/AntiqueTrail
Brochure designer: Melissa@AntiqueTrail.com
VT Sales Associate: Lori@AntiqueTrail.com

Go green and recycle...buy antiques!

VERMONT *Antique* TRAIL.com

Northeast Kingdom



LYNDONVILLE
(1) Antiques & Emporium
182 S Wheelock Rd, VT 05851
802-626-3500
AntiquesAndEmporium.com



ST JOHNSBURY
(2) Moose River Lake & Lodge Store
370 Railroad St, VT 05819
802-748-2423
MooseRiverLakeAndLodgeStore.com

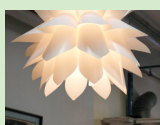


ST JOHNSBURY
(3) St. Johnsbury Antiques
446 Railroad St, VT 05819
802-748-6000
StJAntiques.com

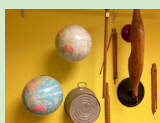
Lake Champlain Valley



COLCHESTER
(4) Wood and Metal Inspired
3424 Roosevelt Hwy, VT 05446
802-878-8100
Wood-Metal-Inspired.com



BURLINGTON
(5) Anjou & the Little Pear
53 Main St, VT 05401
802-540-0008
AnjouVT.com



SOUTH BURLINGTON
(6) Upstairs Antiques
1335 Shelburne Rd, VT 05403
802-859-8966
UpstairsAntiquesVT.com



ESSEX JUNCTION
(7) Five Corners Antiques
11 Maple St, VT 05452
802-878-6167
FiveCornersAntiques.com



SHELBURNE
(8) Furniture Consignment Center
3093 Shelburne Rd, VT 05482
802-497-3342
FurnitureConsignmentCenter.com



SHELBURNE
(9) Patina
5288 Shelburne Rd, VT 05482
802-985-5609
PatinaVT.com

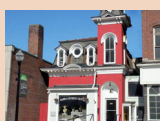
Central Vermont



WAITSFIELD
(10) The Store
5275 Main St, VT 05673
802-496-4465
VermontStore.com



MONTPELIER
(11) The Alley
75 Main St, VT 05602
802-229-0019
TheAlleyAntiques.com



BARRE
(12) Barre Antiques Center
135 N Main St, VT 05641
802-279-2221
BarreAntiques.com



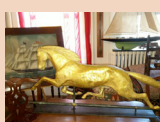
BARRE
(13) Grakles and Borrowed Time Books
162 N Main St Ste 103, VT 05641
Grakles.com



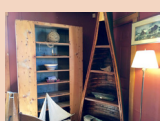
BARRE
(14) Last Time Around
114 N Main St, VT 05641
802-476-8830
LastTimeAroundAntiques.com



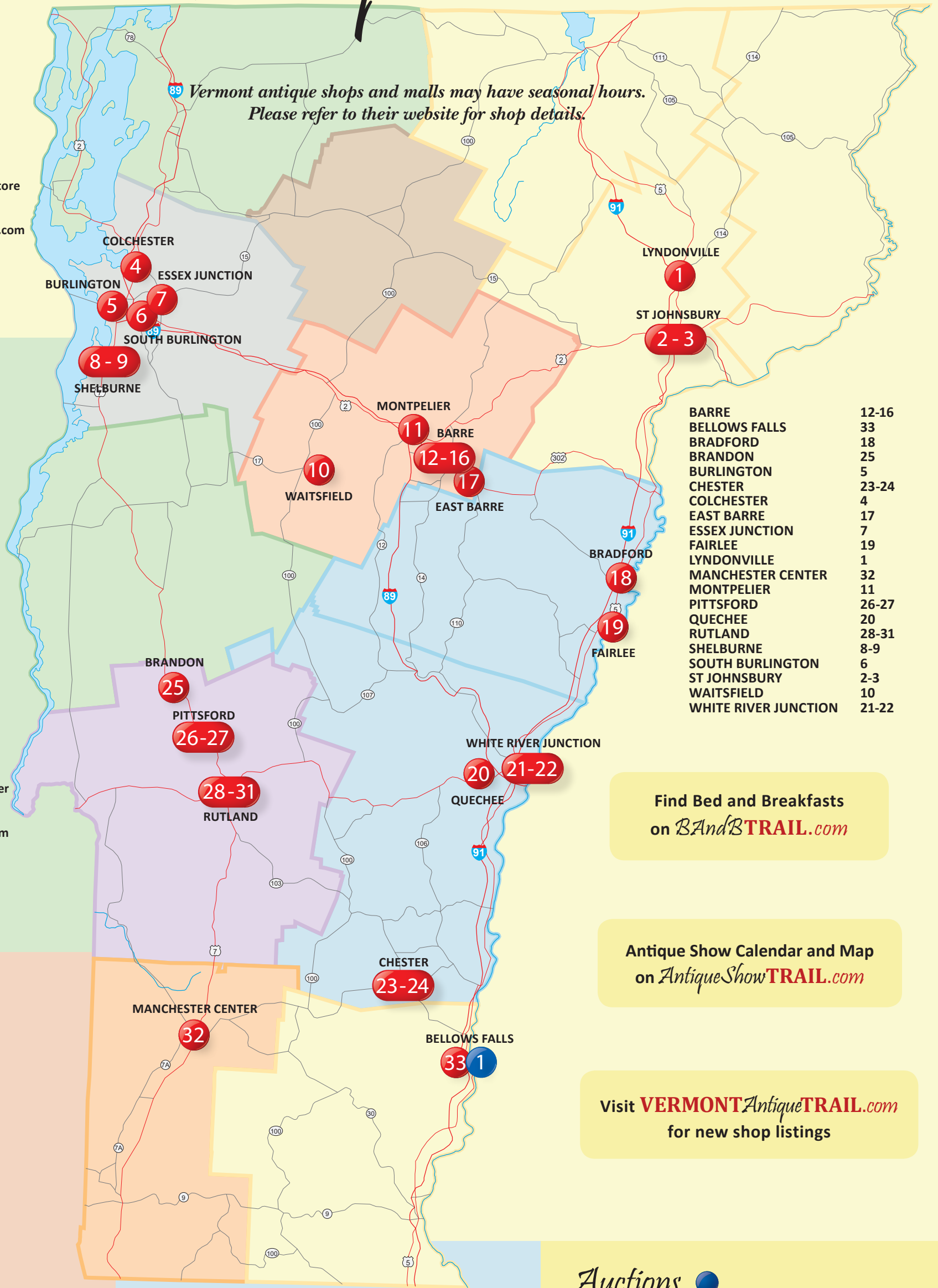
BARRE
(15) Old Town Hall Antiques Center
75 N Main St, VT 05641
802-279-2221
OldTownHallAntiquesCenter.com



BARRE
(16) The Club House
105 N Main St Ste 104, VT 05641
802-476-4002
ClubHouseAntiques.com



EAST BARRE
(17) East Barre Antique Mall
133 Mill St, VT 05649
802-479-5190
EastBarreAntiqueMallVT.com



BARRE	12-16
BELLOWS FALLS	33
BRADFORD	18
BRANDON	25
BURLINGTON	5
CHESTER	23-24
COLCHESTER	4
EAST BARRE	17
ESSEX JUNCTION	7
FAIRLEE	19
LYNDONVILLE	1
MANCHESTER CENTER	32
MONTPELIER	11
PITTSFORD	26-27
QUECHEE	20
RUTLAND	28-31
SHELBURNE	8-9
SOUTH BURLINGTON	6
ST JOHNSBURY	2-3
WAITSFIELD	10
WHITE RIVER JUNCTION	21-22

Find Bed and Breakfasts
on *BAndB* **TRAIL.com**

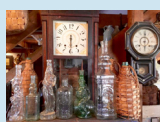
Antique Show Calendar and Map
on *AntiqueShow* **TRAIL.com**

Visit **VERMONT** *Antique* **TRAIL.com**
for new shop listings

Eastern Vermont Gateway



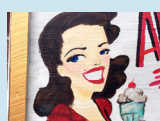
BRADFORD
(18) Gardenhouse Studio
159 Main St, VT 05033
802-449-3171
GardenhouseStudio.com



FAIRLEE
(19) Gryphon Antiques
On The Town Green, VT 05045
802-222-4488
GryphonAntiquesVT.com



QUECHEE
(20) Vermont Antique Mall
5573 Woodstock Rd, VT 05001
802-281-4147
VermontAntiqueMall.com

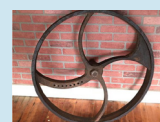


WHITE RIVER JUNCTION
(21) Antique Junction
25 S Main St, VT 05001
802-431-7014
AntiqueJunctionWRJVT.com

Auctions



BELLOWS FALLS
(1) S.B. and Company Auctioneers
46 Canal St, VT 05101
802-460-1190
SBAuctioneers.com



WHITE RIVER JUNCTION
(22) Fletcher Creations
63 Gates St, VT 05001
802-698-3865
FletcherCreations.org



CHESTER
(23) Stone House Antique Center
557 Vermont Route 103 S, VT 05143
802-875-4477
StoneHouseAntiqueCenter.com



CHESTER
(24) William Austin Antiques & Restaurant
42 Maple St, VT 05143
802-875-3032
WilliamAustinAntiquesAndRestaurant.com